

**ENR 6. EN-ROUTE CHARTS**

**INTENTIONALLY**

**LEFT**

**BLANK**

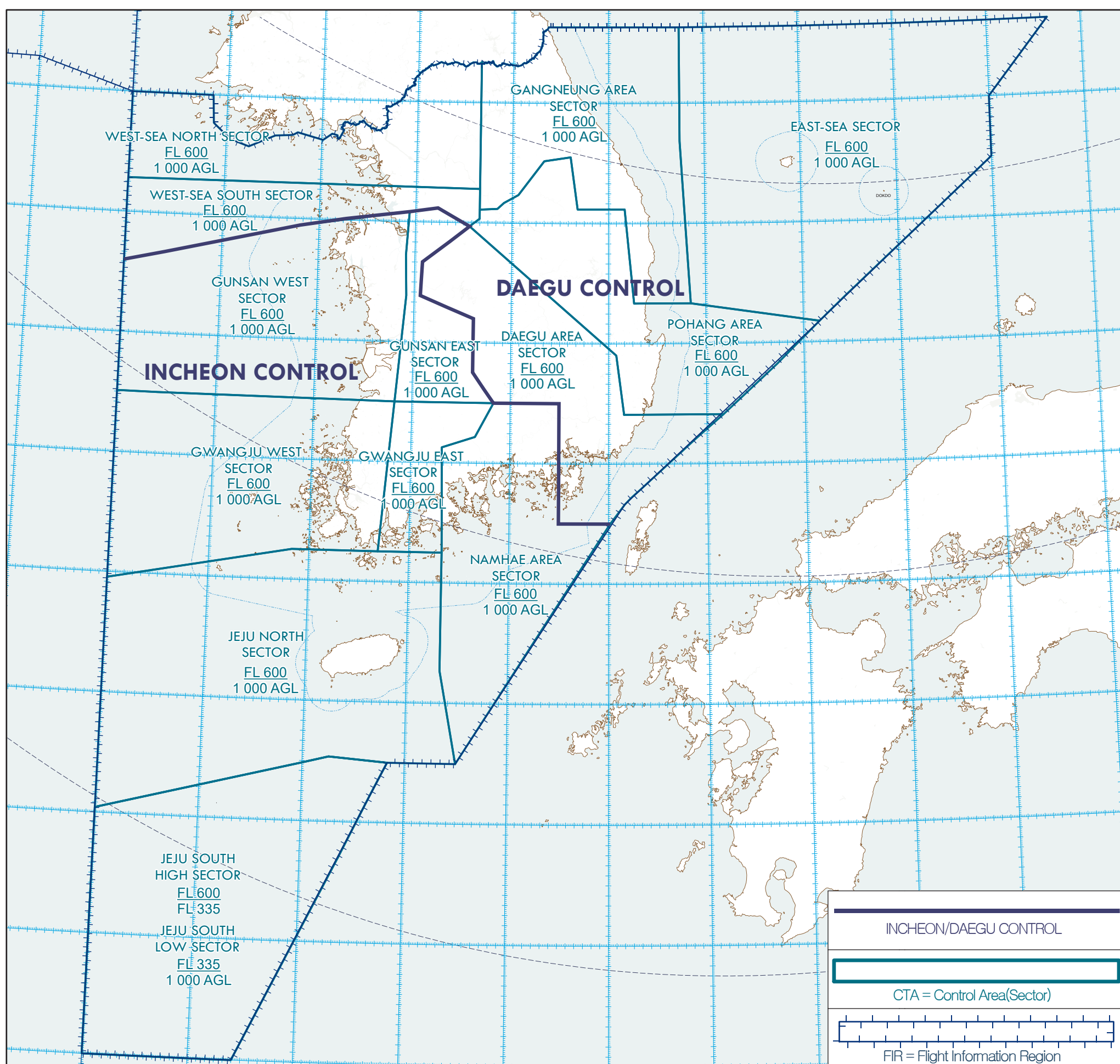
**INTENTIONALLY**

**LEFT**

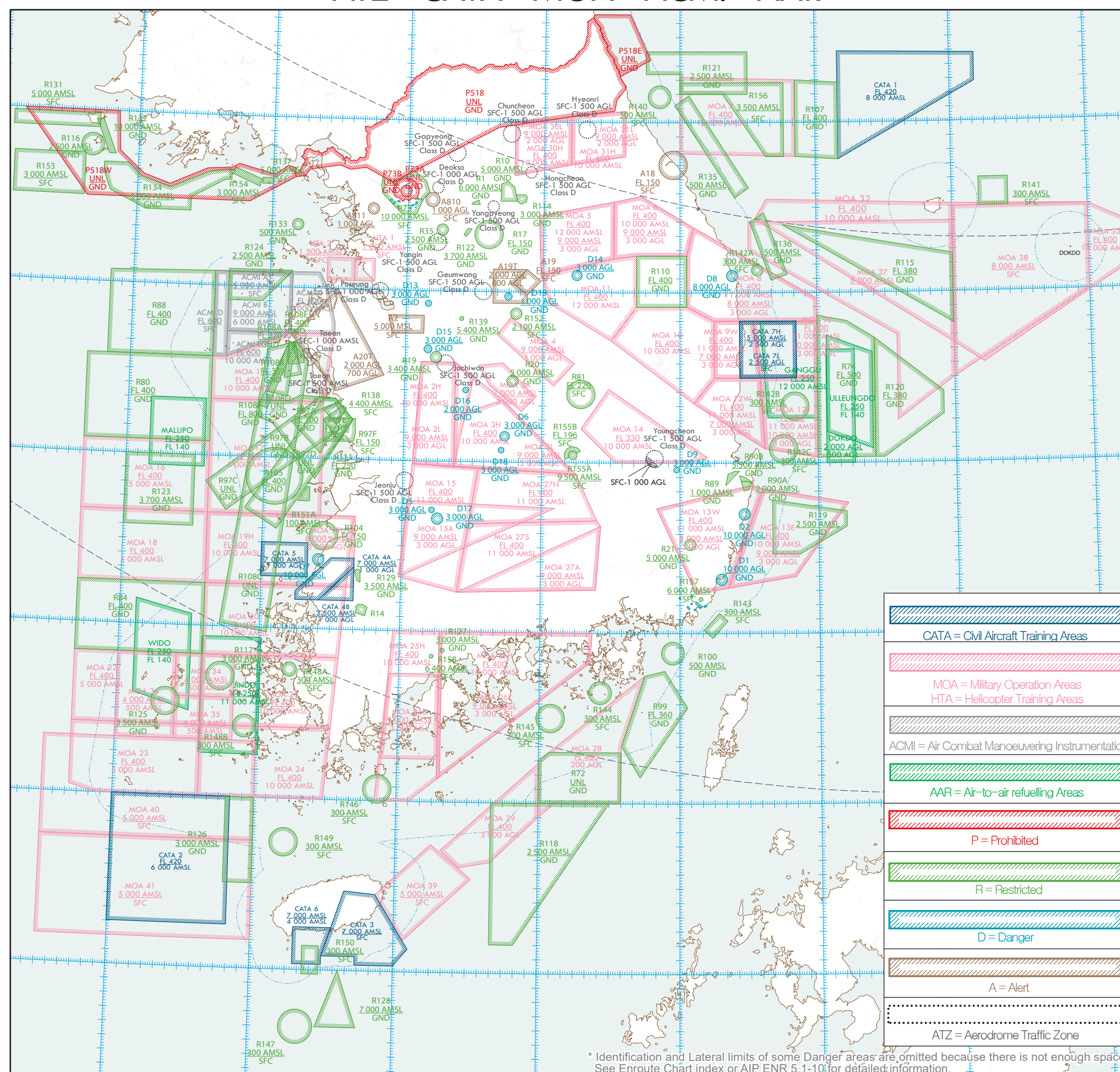
**BLANK**



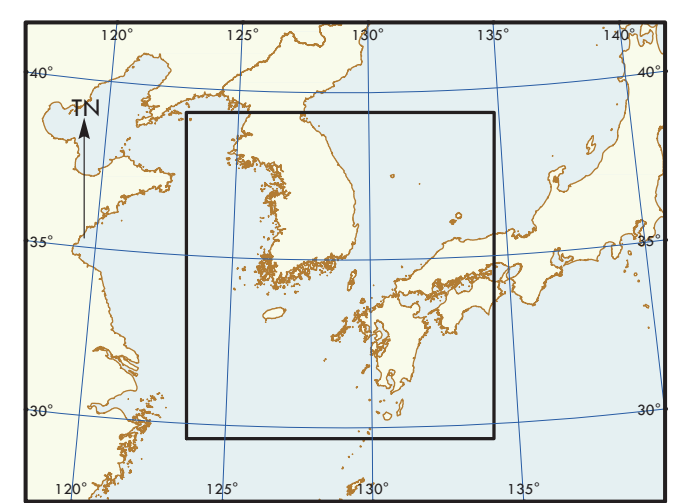
ACC · CTA · FIR



PROHIBITED · RESTRICTED · DANGER · ALERT · ATZ · CATA · MOA · ACMI · AAR



ENROUTE CHART - ICAO



PUBLICATION 2 JUN 2022

Effective: 1600UTC 13 JUL 2022

OFFICE OF CIVIL AVIATION  
MINISTRY OF LAND, INFRASTRUCTURE AND TRANSPORT  
REPUBLIC OF KOREA

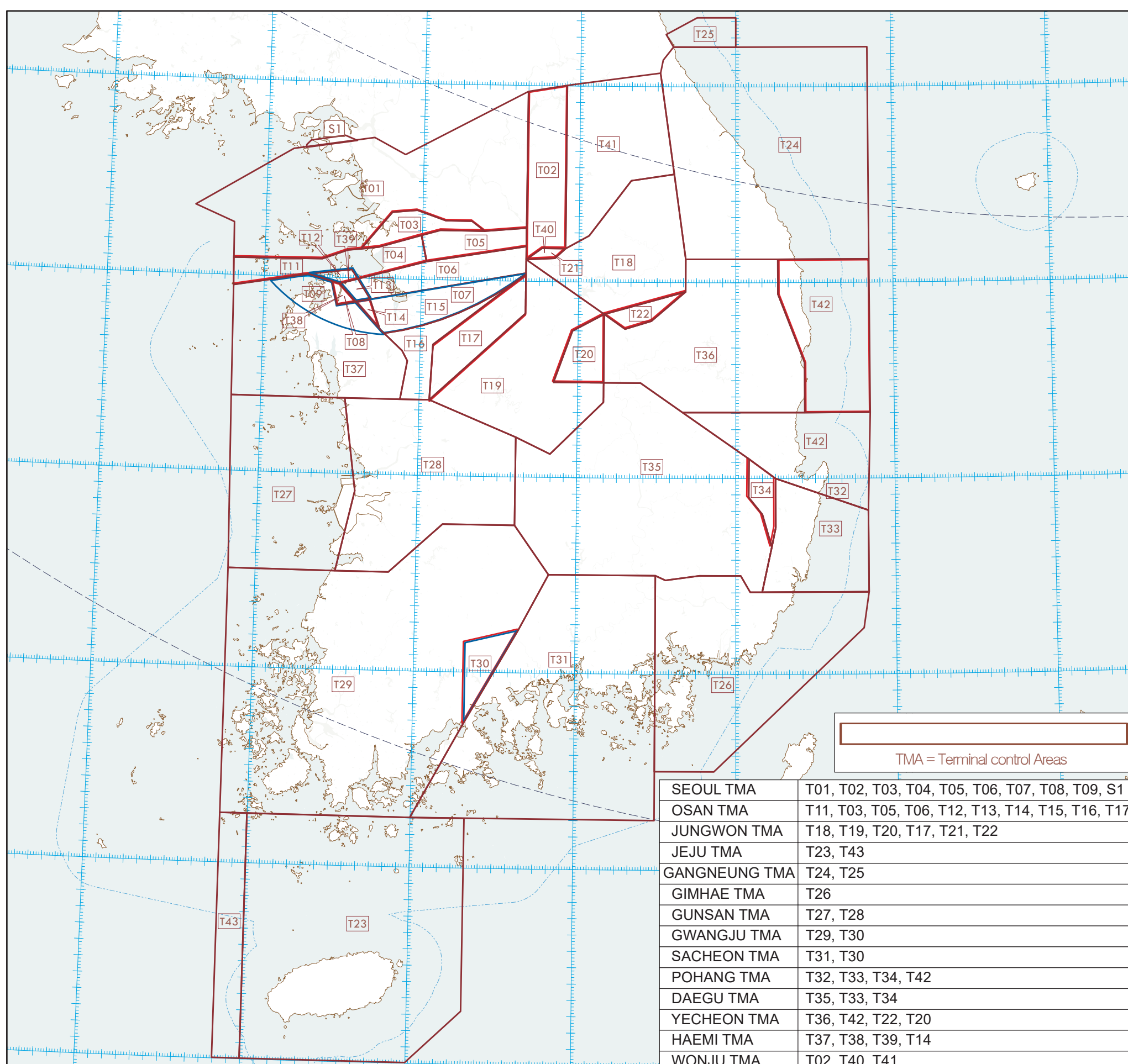
\* The information contained is based on Aeronautical Information Publication.

AIRSPACE RESTRICTIONS

TIME : UTC, ALT : Feet

Table listing various airspace restrictions with columns for Class, Type of Flight, Separation, Service, Radio Communication, and Subject to ATC clearance. Includes sections for Prohibited Areas, Restricted Areas, and Danger Areas.

TMA

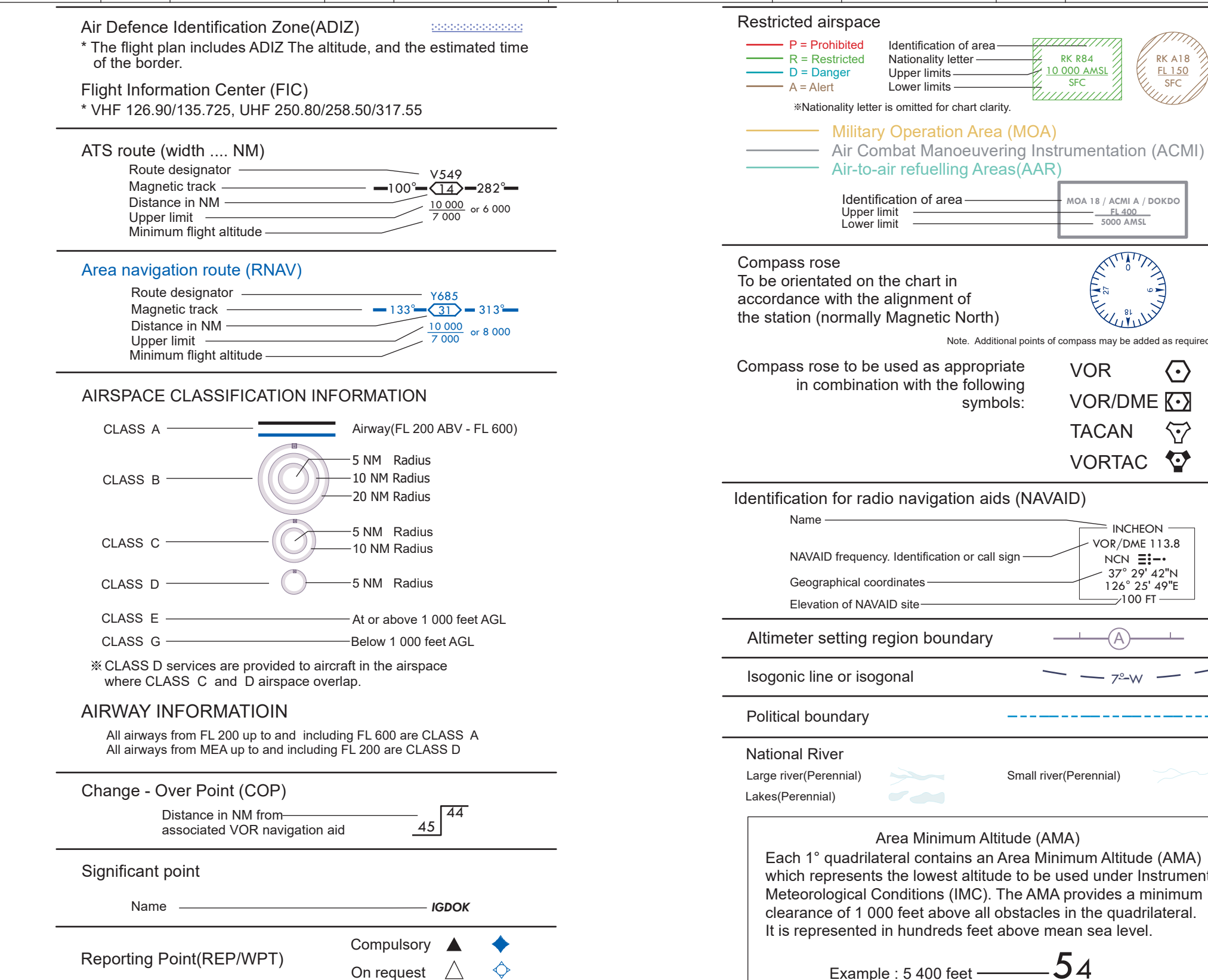
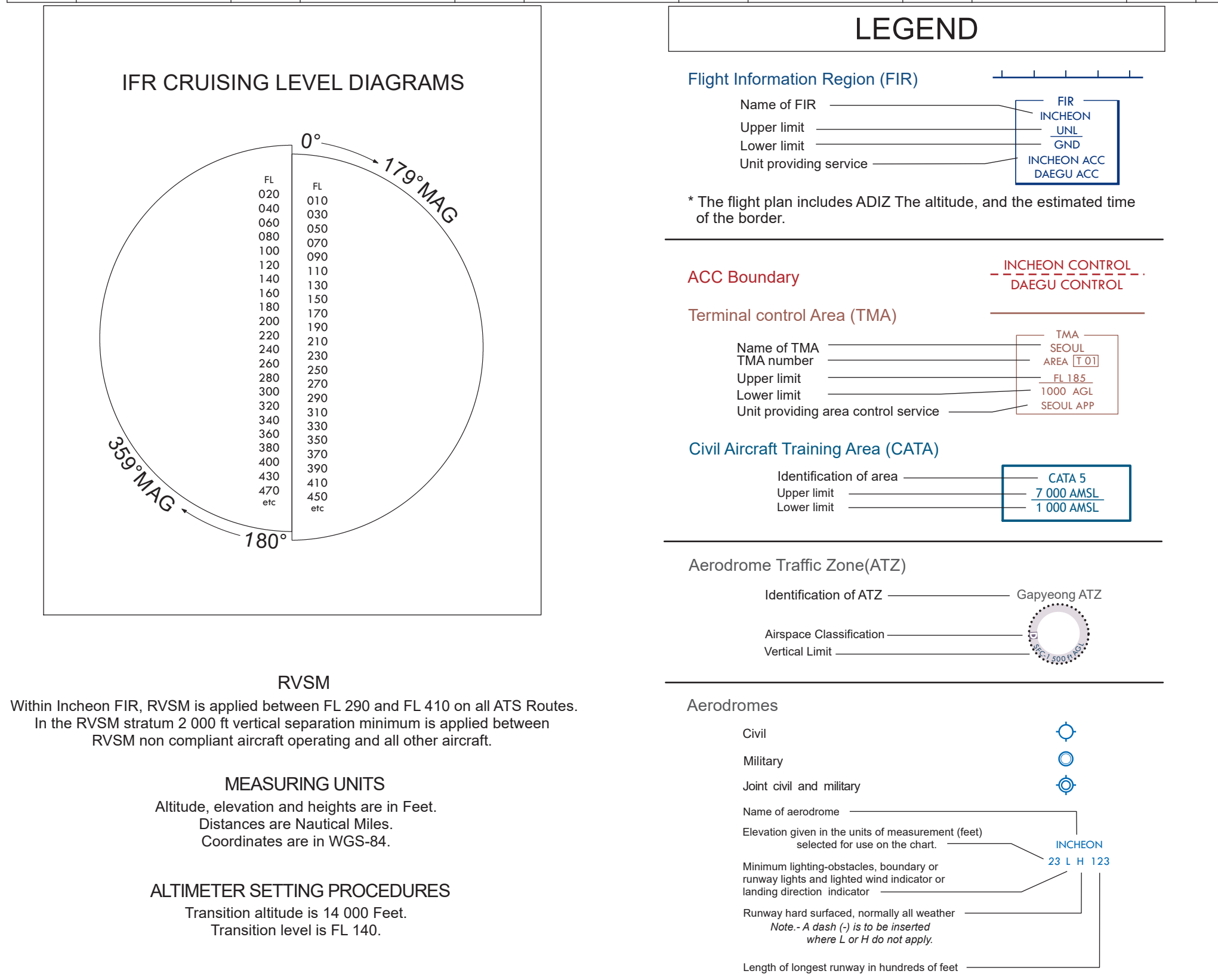


ATS Airspace Classifications

Table detailing ATS Airspace Classifications (A through G) with columns for Type of Category, Class, Designated areas and altitude, Type of Flight, Separation, Service, Radio Communication, and Subject to an ATC clearance.

Table listing various airports and their coordinates, including Seoul, Incheon, Daegu, and Jeju.

Table listing various airports and their coordinates, including Seoul, Incheon, Daegu, and Jeju.



DANGER AREAS

Table listing Danger Areas (DA) with columns for Class, Type of Flight, Separation, Service, Radio Communication, and Subject to ATC clearance.

ALERT AREAS

Table listing Alert Areas (AA) with columns for Class, Type of Flight, Separation, Service, Radio Communication, and Subject to ATC clearance.

CIVIL AIRCRAFT TRAINING AREAS (CATA)

Table listing Civil Aircraft Training Areas (CATA) with columns for Class, Type of Flight, Separation, Service, Radio Communication, and Subject to ATC clearance.

MILITARY OPERATION AREAS (MOA)

Table listing Military Operation Areas (MOA) with columns for Class, Type of Flight, Separation, Service, Radio Communication, and Subject to ATC clearance.

AIR COMBAT MANOEUVRING INSTRUMENTATION (ACMI)

Table listing Air Combat Manoeuvring Instrumentation (ACMI) with columns for Class, Type of Flight, Separation, Service, Radio Communication, and Subject to ATC clearance.

AIR-TO-AIR REFUELLING AREAS

Table listing Air-to-Air Refueling Areas (AAR) with columns for Class, Type of Flight, Separation, Service, Radio Communication, and Subject to ATC clearance.

AERODROME TRAFFIC ZONE (ATZ)

Table listing Aerodrome Traffic Zones (ATZ) with columns for Class, Type of Flight, Separation, Service, Radio Communication, and Subject to ATC clearance.

MEASURING UNITS: Altitude, elevation and heights are in Feet. Distances are Nautical Miles. Coordinates are in WGS-84.

Area Minimum Altitude (AMA): Each 1° quadrilateral contains an Area Minimum Altitude (AMA) which represents the lowest altitude to be used under Instrument Meteorological Conditions (IMC).





The reliability of aeronautical information outside the Incheon FIR is doubtful, and it should be used with caution.

COMMUNICATION FACILITIES

INCHON ACC	126 176, 134 375, 317 85, 335 55
INCHON CONTROL	126 176, 134 375, 317 85, 335 55
GUNSAN EAST SECTOR	132 15, 123 55, 203 15, 272 80
GUNSAN WEST SECTOR	132 725, 124 50, 241 80, 275 40
GWANGJU EAST SECTOR	120 725, 126 30, 203 80, 272 75
GWANGJU WEST SECTOR	124 525, 132 425, 253 40, 348 10, 233 50
JEJU NORTH SECTOR	133 425, 134 15, 234 35, 234 65
JEJU SOUTH SECTOR	125 725, 126 825, 203 85, 233 85, 233 15
JEJU SOUTH LOW SECTOR	128 175, 128 225, 132 25, 335 55, 275 20*
NAMHAE AREA SECTOR	COMMON 132 20, 305 9
DAEJU ACC	EMERGENCY 121 50, 243 00
DAEJU CONTROL	CONTINGENCY USE ONLY
WEST-SEA NORTH SECTOR	132 80, 118 925, 290 60, 335 45, 317 30*
WEST-SEA SOUTH SECTOR	128 70, 120 525, 270 50, 263 60, 317 30*
EAST-SEA AREA SECTOR	122 25, 125 60, 134 40, 135 70, 225 10, 220 10, 263 80, 363 80
GANGNEUNG AREA SECTOR	134 175, 123 65, 272 40, 233 60*
POHANG AREA SECTOR	120 575, 119 375, 119 320, 254 70, 335 75*
POHANG AREA SECTOR	123 375, 125 775, 124 575, 254 10, 317 30*, 335 50*
COMMON	122 75, 202 75
EMERGENCY	121 50, 243 00
CONTINGENCY USE ONLY	
INCHON/DAEJU PIC	
DAEJU INFORMATION	120 80, 132 725, 250 80, 258 50, 317 55
EMERGENCY	121 50, 243 00
SEoul RADIO	127 10
300A MHz, 6333 MHz, 8003 MHz	
13300 MHz, 13302 MHz, 17004 MHz	
APPROACH CONTROL	
INCHON APP	119 80, 119 10, 119 75, 124 70, 120 80, 121 35, 121 40, 123 5, 123 10
JEJU APP	119 20, 124 20, 124 25, 317 70, 279 80, 121 50, 243 00
GWANGJU APP	119 20, 125 60, 134 40, 135 70, 225 10, 220 10, 263 80, 363 80
121 50, 243 00	
GWANGJU APP	130 20, 226 80, 121 50, 243 00
GANGNEUNG APP	124 80, 304 00, 121 50, 243 00
POHANG APP	135 725, 234 40, 192 2, 121 50, 243 00
SACHON APP	135 40, 14 70, 121 50, 243 00
DAEJU APP	120 20, 232 40, 124 25, 121 50, 243 00
DAEJU APP	135 90, 346 30, 121 50, 243 00
YEosu APP	134 20, 226 75, 121 50, 243 00
HAEM APP	124 80, 229 25, 253 80, 121 50, 243 00
JINJU APP	132 35, 305 70, 121 50, 243 00
GUNSAN APP	124 10, 203 65, 121 50, 243 00
OSAN APP	127 30, 363 10, 121 50, 243 00

CONVENTIONAL routes within 100M except the following segments:  
 -AS56 (GJU - SMDU) - RMN  
 -G339 (PBN - RVK) - RMN  
 -G585 (SEL - SAPP) - RMN  
 -V11 (PBN - RVK) - RMN  
 -AS3 (CNK) - LAMEN) - 500M  
 -B332 (KANSU - GONAS) - 500M  
 -B447 (KANSU - TENAS) - 500M

4008 (TENAS - PBN) (CORS) (Operational Hour/UTC):  
 - Weekdays - 1100 - 2200  
 - SAT - 2200 on the preceding day until 2200 on the Saturday  
 - SUN - 0000 - 2200

4009 (TENAS - PBN) (CORS) (Operational Hour/UTC):  
 - Weekdays - 1400 - 2200  
 - SAT - 2200 on the preceding day until 2400 on the Saturday  
 - SUN - 0000 - 2200  
 - Holiday - 1400 on the preceding day until 2200 on the holiday

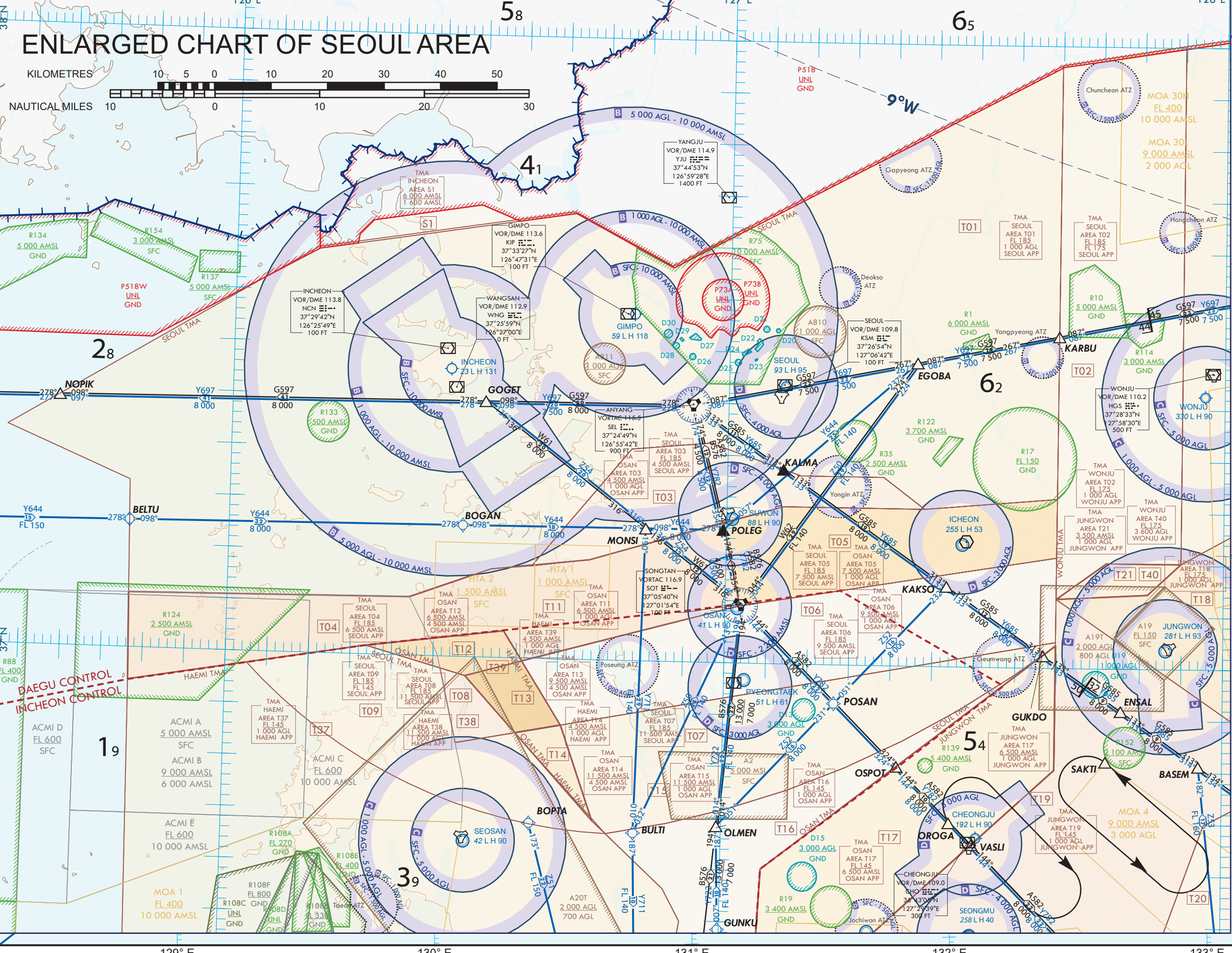
4003 - Flight Level Allocation Scheme (FLAS)  
 - Eastbound: FL 240, FL 260, FL 280, FL 300, FL 320, FL 340, FL 360, FL 380, FL 400  
 - Westbound: FL 270, FL 290, FL 310, FL 330, FL 350, FL 370, FL 390, FL 410  
 - Eastbound from Shanghai FIR to Fukushima FIR: FL 250, FL 290, FL 310, FL 350  
 - Westbound from Fukushima FIR to Shanghai FIR: FL 240, FL 280, FL 300, FL 340

4005 (SEL - KPO):  
 - SAT - 2200 on the preceding day until 2200 on the Saturday  
 - PPR 24 hours before from Incheon/DAEJU ACC.  
 - No PPR is needed or below 10 000 ft.

4007 (PBN - LAMEN):  
 - Only flying westbound from SEL to AGAWO on 0507/0907 is authorized (unless otherwise assigned by ATIS, flying eastbound in this way what is allowed)  
 - Aircraft flying eastbound from AGAWO to SEL on 0507 shall get PPR 24 hours before from Incheon/DAEJU ACC.  
 - Only flying westbound from LAMEN to KAE on 0507 shall get 24Hrs PPR from Daejeon ACC.

4012 (TENAS-ANDOL)  
 After ANCH, MEA FL250, use APN JAPAN

4014 (PBN-PLIT):  
 - 11 000 ft to FL240 or above FL260 will be blocked.  
 - At or above 11 000 ft, required 15 days PPR from Air Traffic Management Office.



SCALE 1:1,360,000  
 KILOMETRES  
 NAUTICAL MILES

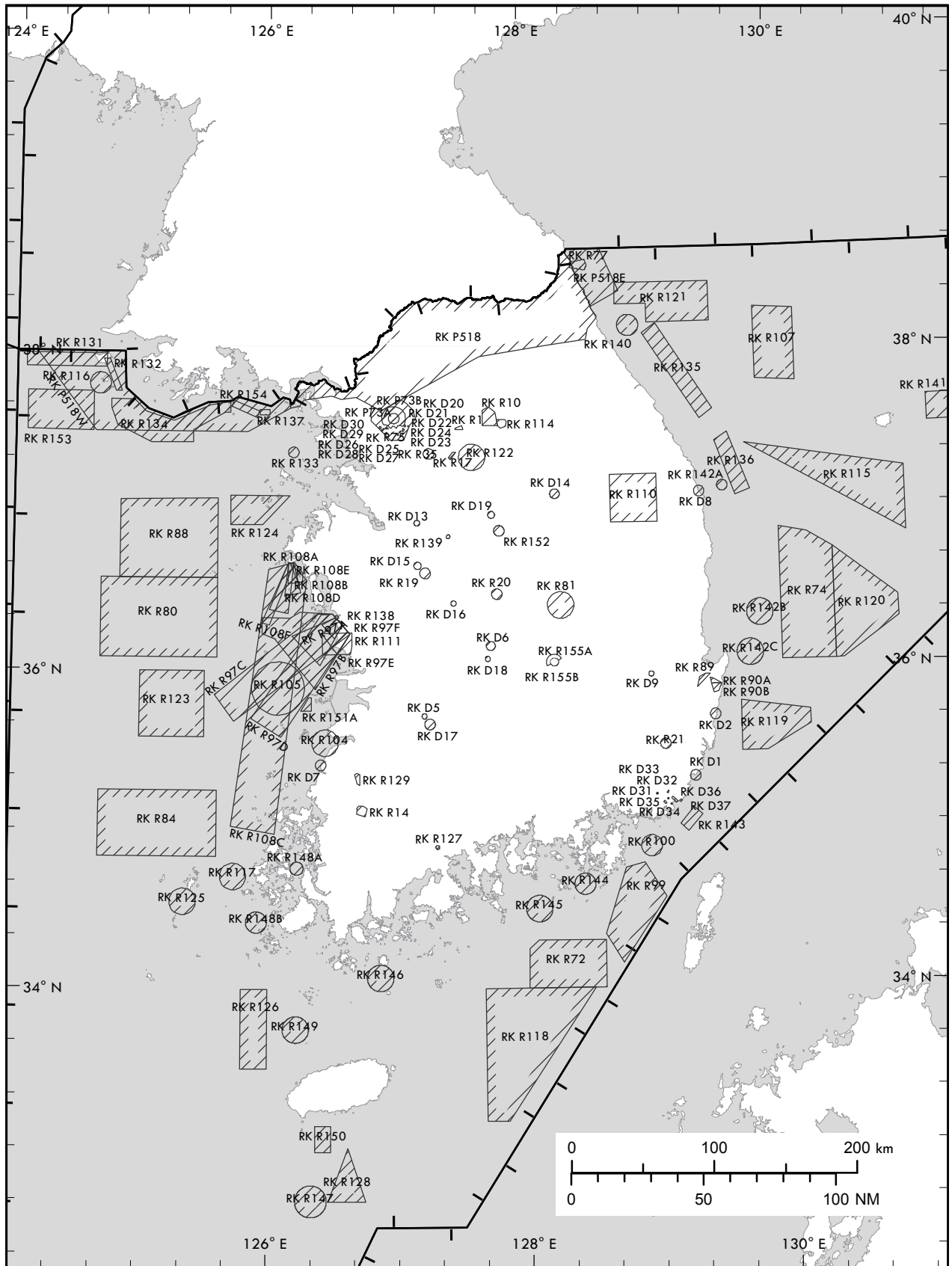


AIR TRAFFIC SERVICES AIRSPACE - INDEX CHART

11

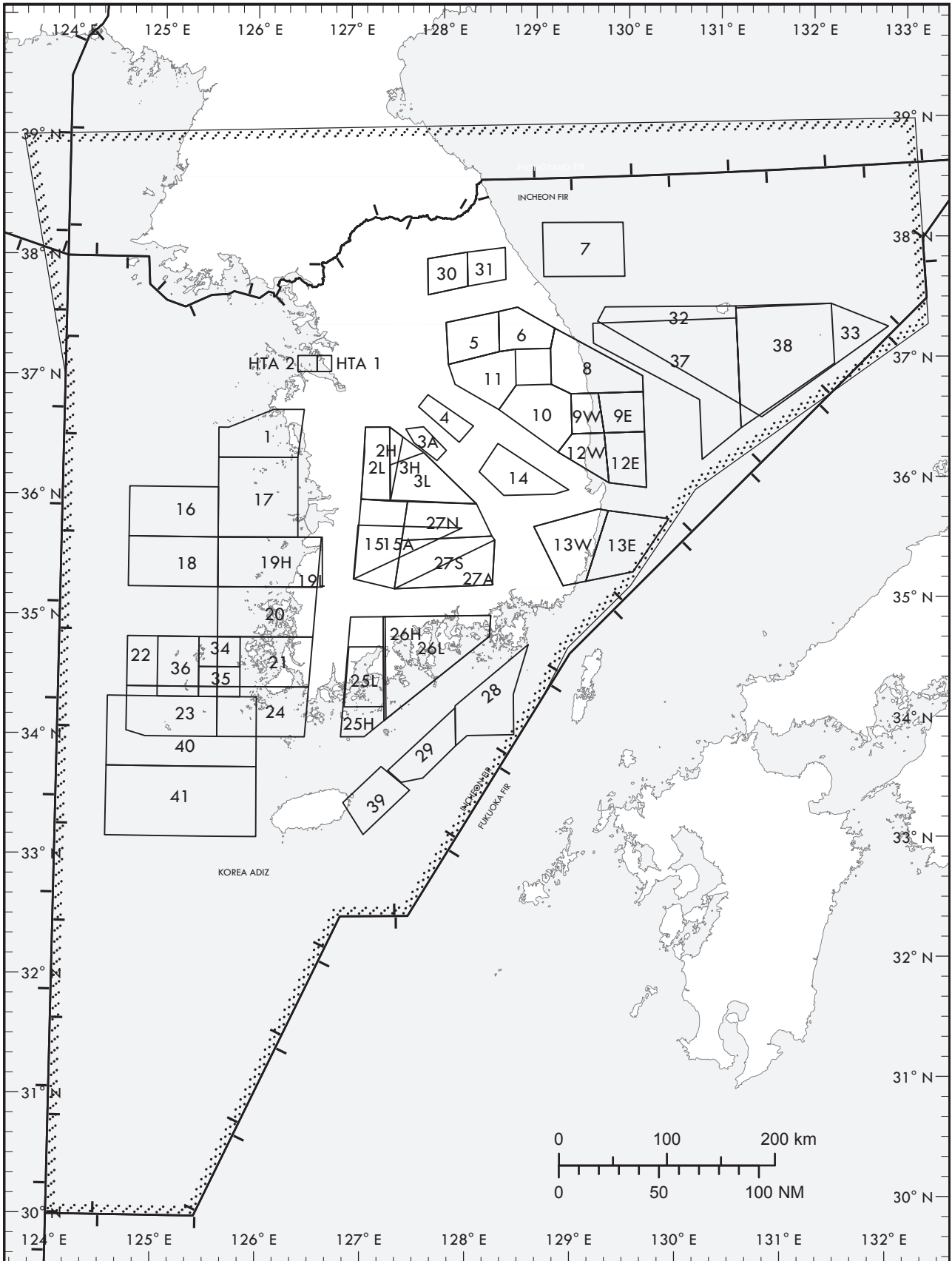
**TO BE DEVELOPED**

### PROHIBITED, RESTRICTED AND DANGER AREAS - INDEX CHART



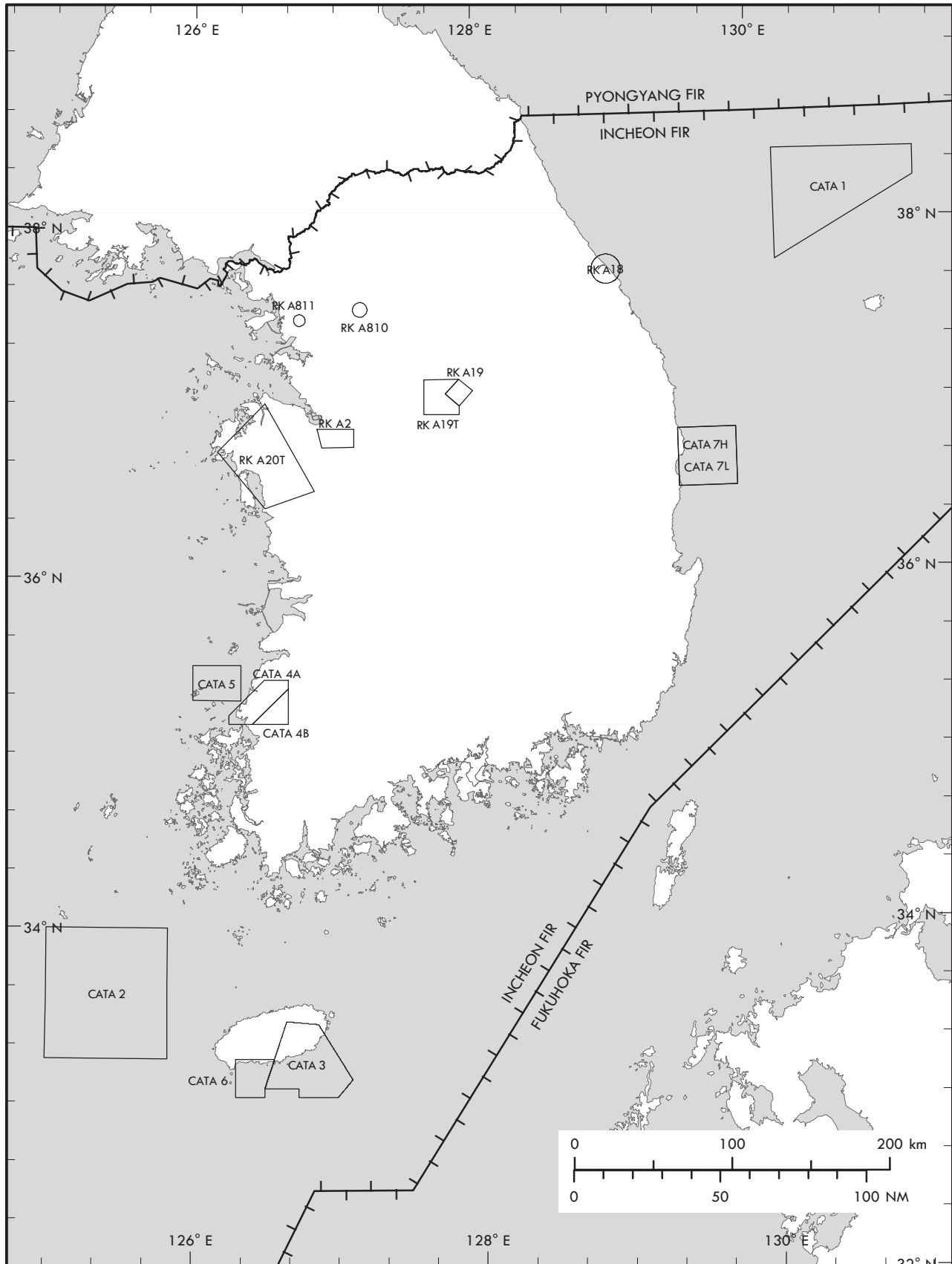
Change : Establishment of RK R155A, R155B.

### MILITARY EXERCISE TRAINING AREAS AND ADIZ - INDEX CHART



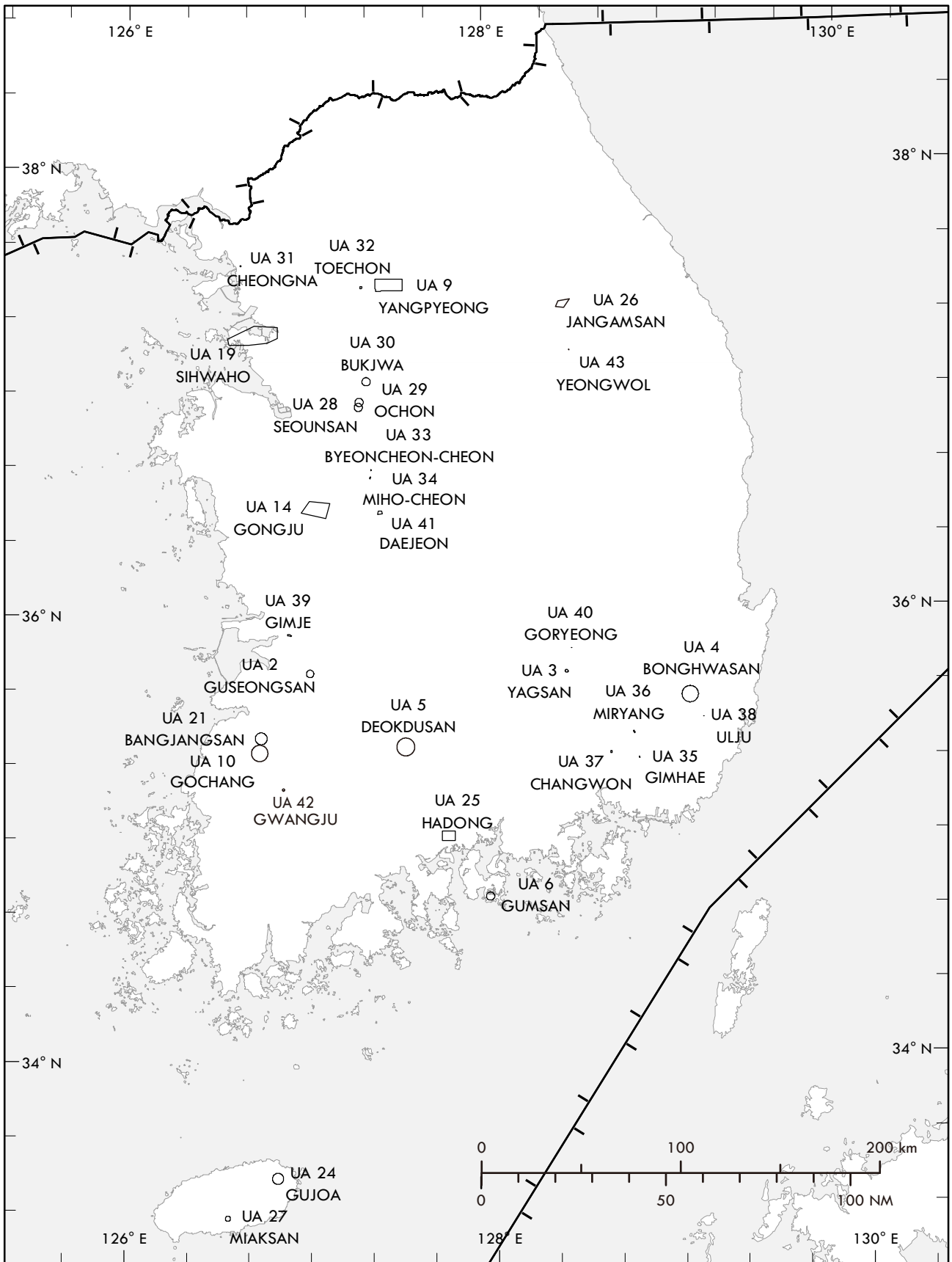
Change : Information of MOA 28.

OTHER ACTIVITIES OF A DANGEROUS NATURE - INDEX CHART



### AERIAL SPORTING AND RECREATIONAL ACTIVITIES -INDEX CHART

The entire area within Incheon FIR is designated as Ultralight vehicle flight restricted area except the following areas



Change : Withdrawal of UA 7(HONGSAN).

RADIO FACILITY - INDEX CHART

**TO BE DEVELOPED**